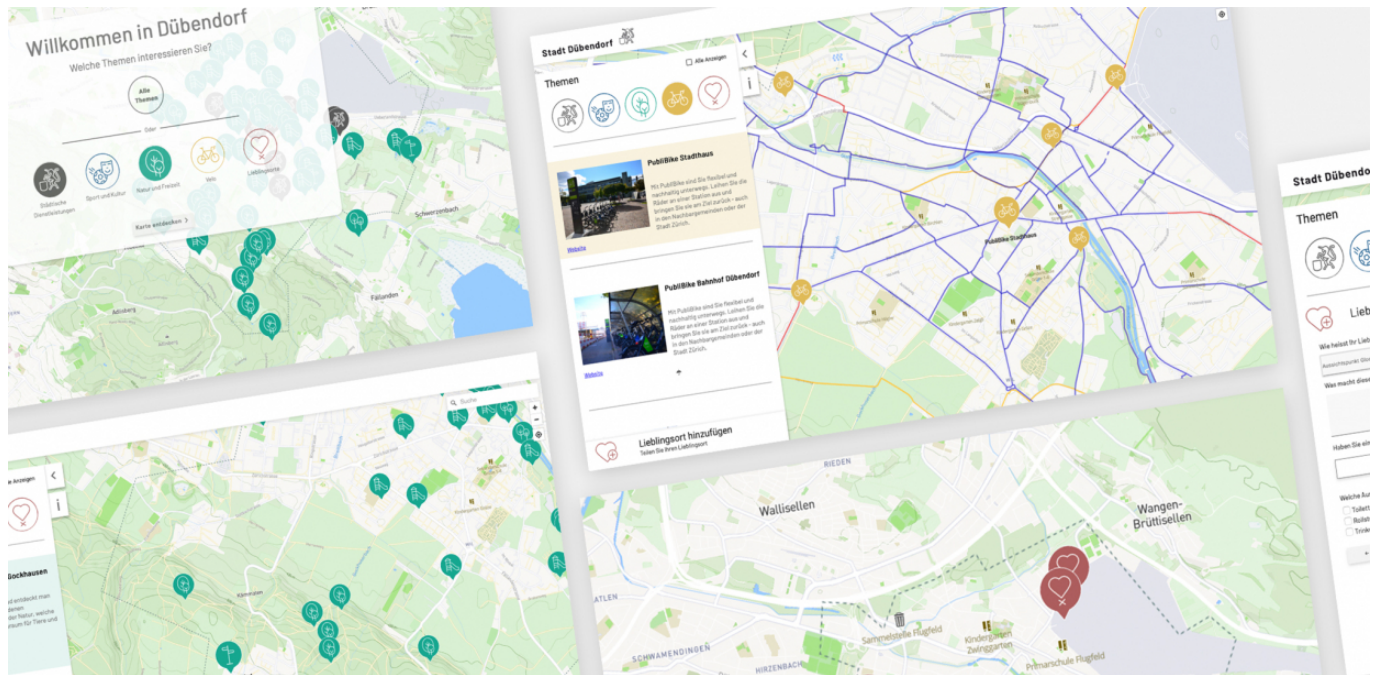


An interactive map for Dübendorf



Working in close consultation with the town of Dübendorf, we developed an interactive map that gives residents an intuitive overview of the town's recreational spaces. The map encourages residents and visitors alike to get out and discover the area's many recreational locations. Outfitted with a special favorite-locations feature, the town map enables all users to enter their personal favorites, thereby also giving them an opportunity to share in the map's development.

Our services

- Iterative development of the content and use concept, including interactive elements in close consultation with the town of Dübendorf
- Development of the visual design for the user interface
- Drafting of an individual design for the background map
- Technical implementation of the Angular and Mapbox-based web application and the admin panel for the release and maintenance of the favorite locations
- Design of a key visual as a basis for the town's map-related public relations measures
- Operation and maintenance of the web application

Client

City of Dübendorf

Facts

Period 2020 - 2021

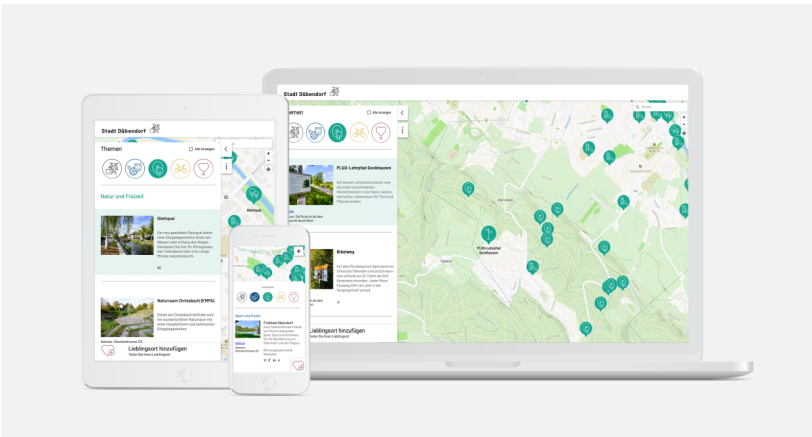
Project Country Switzerland

Contact persons

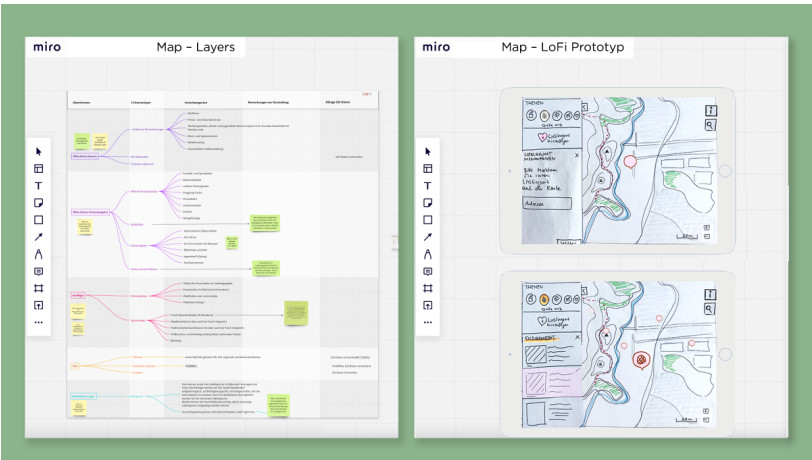
Andrea Bianchin
andrea.bianchin@ebp.ch

Sarah Schöni
sarah.schoeni@ebp.ch

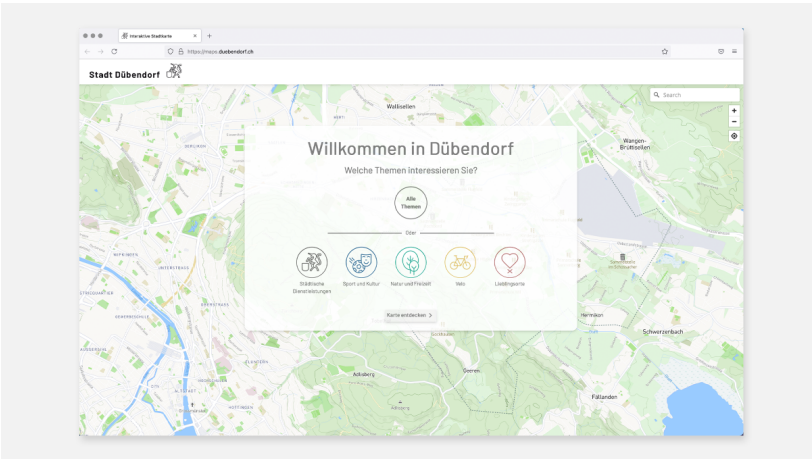
An interactive map for Dübendorf



User-friendly on all end devices

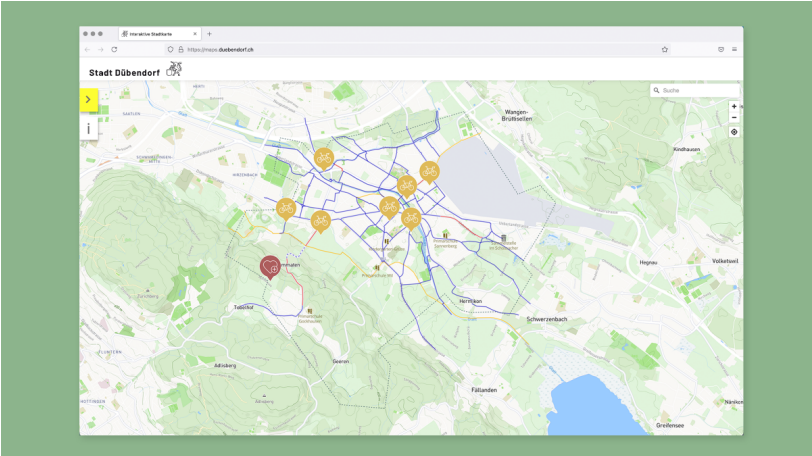


In close consultation with the town of Dübendorf: iterative, user-centered application development, ranging from the information architecture to the initial sketches (lo-fi prototypes) and the map's implementation.

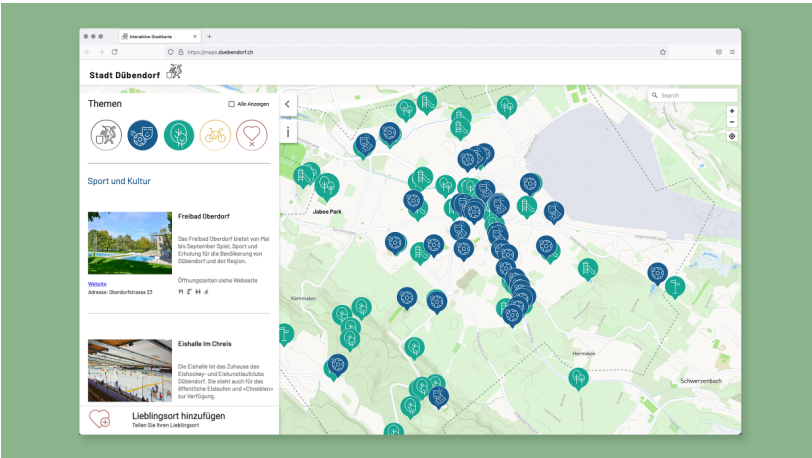


Map access

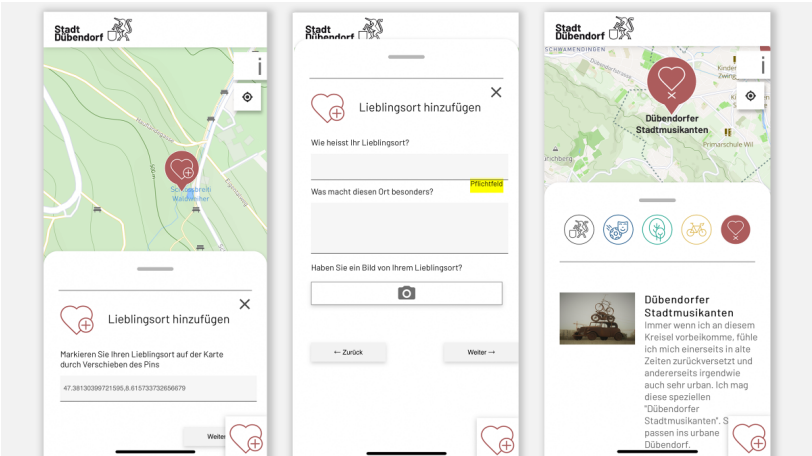
An interactive map for Dübendorf



View of bike-path network



The map offers an engaging overview of the town wide range of recreational spaces, encouraging residents and visitors alike to discover the town.



Users are encouraged to enter their favorite locations on the map. Each new entry is checked by the town before publication.