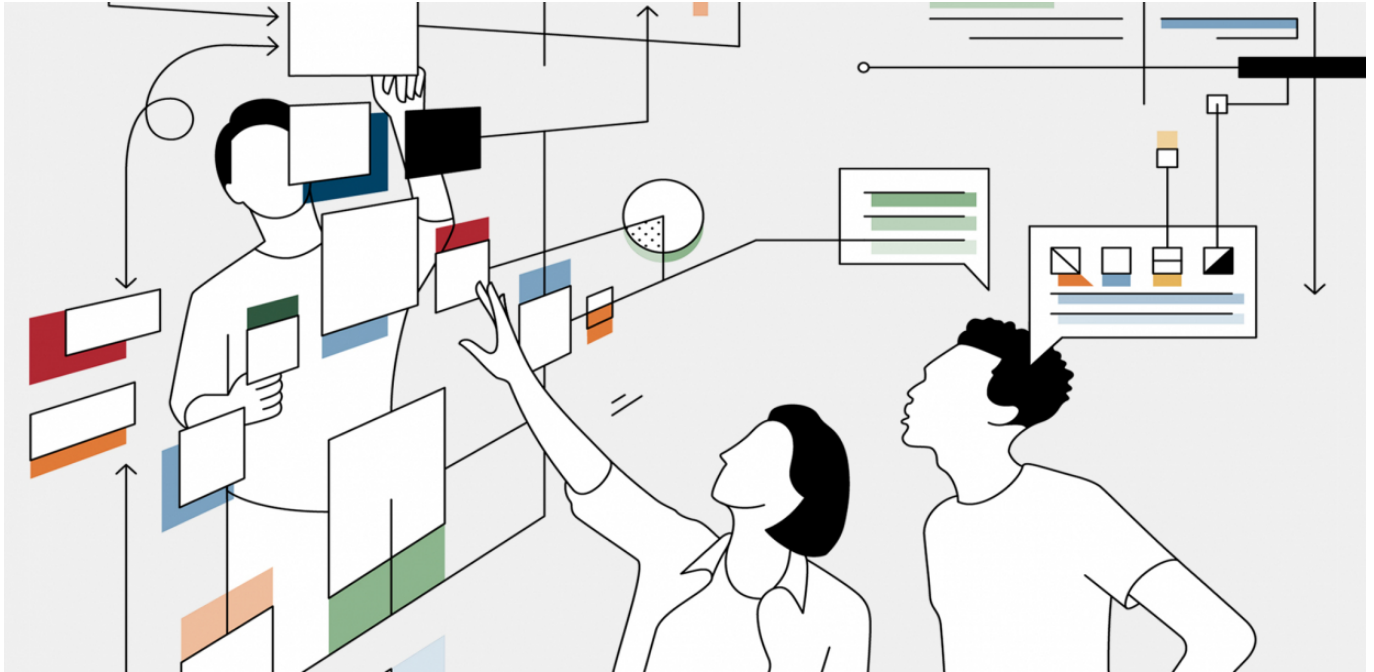


Newteaching and learning methods in higher education– Impacts on spatial needs



Approaches to teaching and learning at institutions of higher education is undergoing a transformation from classic, lecture-style teaching to more participative and collaborative activities. This changes the space requirements. We translated the new requirements of these instructional approaches into the physical space, established an overview of the new types of spaces for institutions of higher education, and developed a qualitative method for determining their spatial needs. Our method can be applied to strategic real-estate planning and space-allocation planning.

Our services

- Organization of workshops with education experts representing all types of higher education institutions
- Analysis of the latest trends and developments in higher education (national and international)
- Evaluation of the spatial requirements for tomorrow's higher education institutions
- Creation of a model for determining spatial requirements based on types of spaces and student populations

Client

EBP development project

Facts

Period 2021

Project Country Switzerland

Contact persons

Bianca Hohl
bianca.hohl@ebp.ch

Flavio Schneeberger
flavio.schneeberger@ebp.ch